

GMP
ANNEX 1
COMPATIBLE



ISO field[®]
Protecting Life Science

WE MAKE CLEAN & STERILE PPE *for* LIFE SCIENCE.

WHY CHOOSE LONGER CLEANROOM GLOVES?



300mm (12")

400mm (16")

400mm (16")

300mm (12")

LONGER.
SAFER.

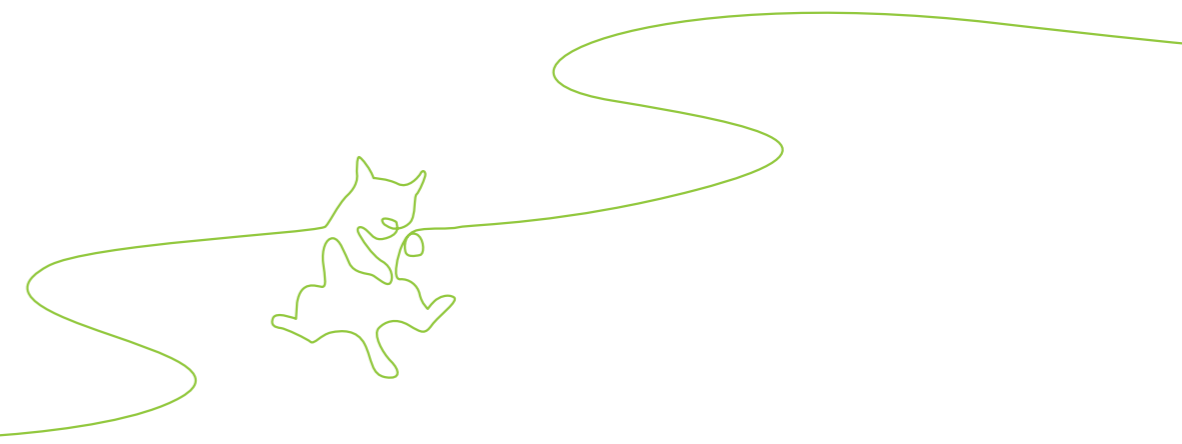


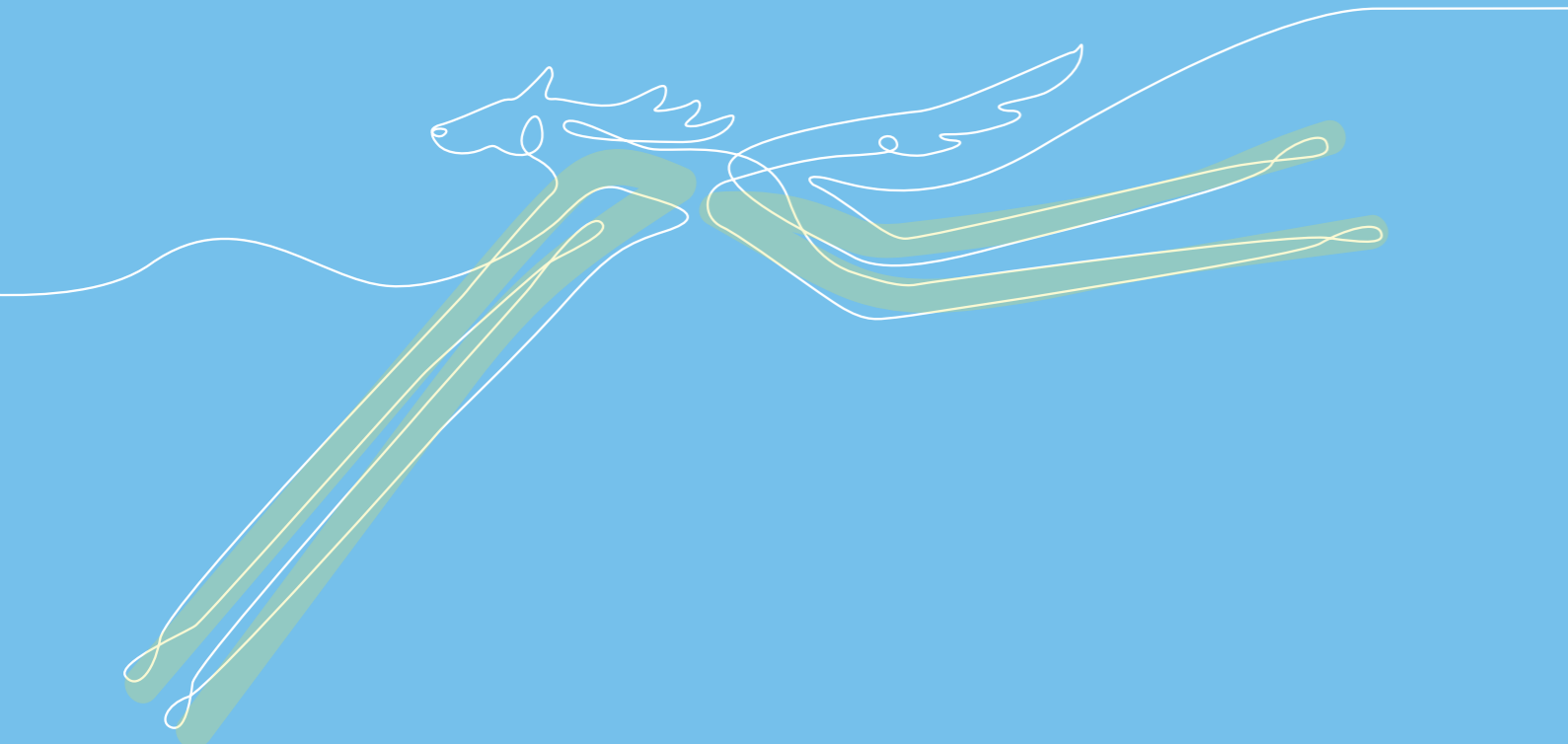
300mm (12")

Safer means 25% longer, providing greater coverage
Safer means 66% less contact during donning^{*1}
Safer means more uniform sanitization

^{*1}Compared to 300mm, Sleeve Cover and Cuff Tape combination

400mm (16")





LONGER.
FASTER.

300mm (12")



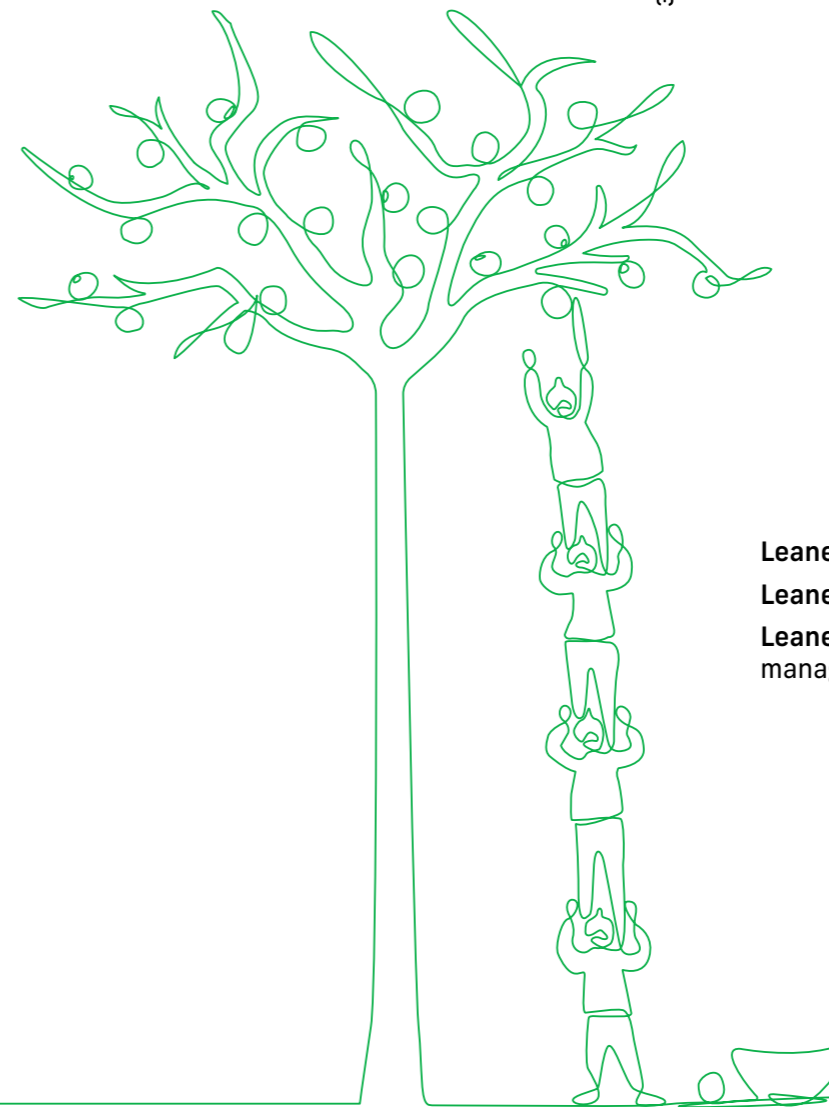
Faster means less donning time. Reduce changing time by up to 60%*¹
Faster means quicker stock replenishment
Faster means more rapid validations

400mm (16")

LONGER. LEANER.



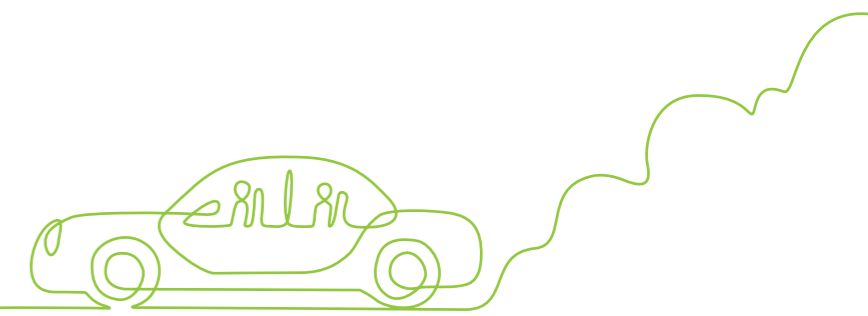
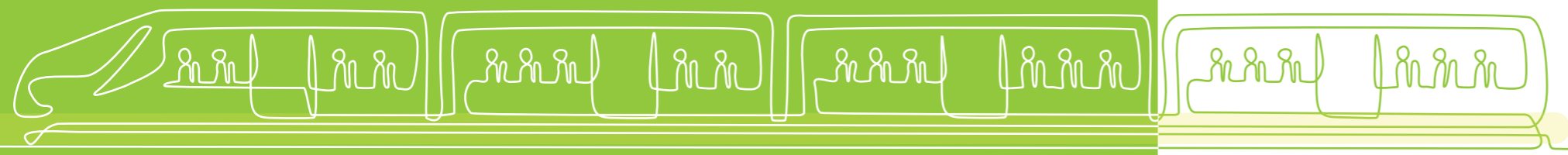
300mm (12")



Leaner means a 15% better forearm grip
Leaner means a more ergonomic workspace
Leaner means more efficient inventory management

400mm (16")

LONGER. GREENER.

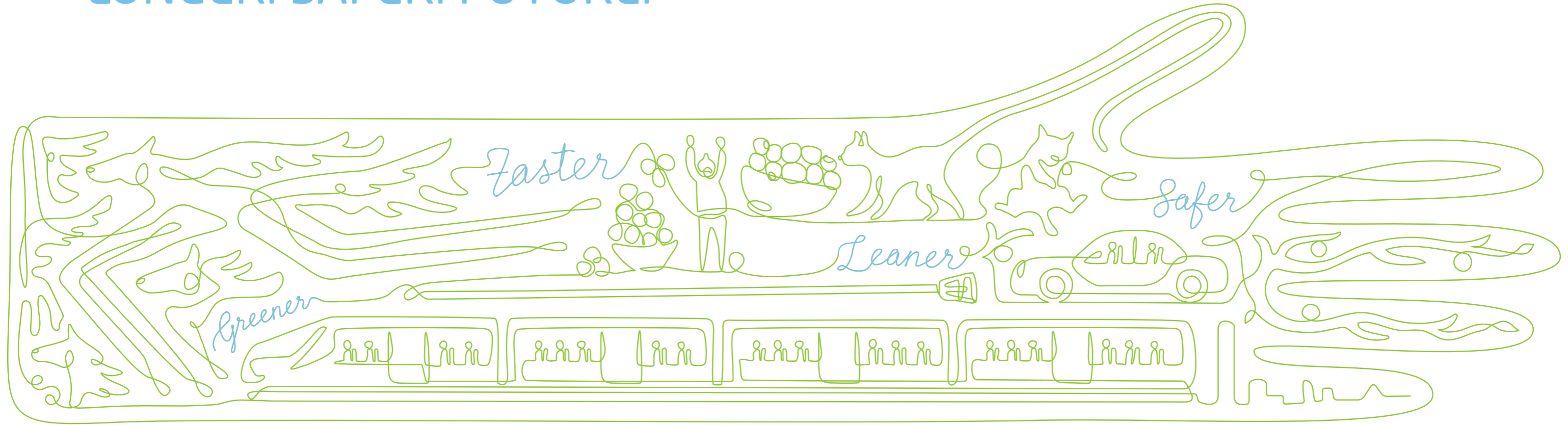


- Greener means** easier to recycle
- Greener means** up to 66% less packaging^{*1}
- Greener means** up to 70% reduction in shipping volume

300mm (12")

400mm (16")

400mm (16in) gloves.
LONGER. SAFER. FUTURE.



ISOFIELD PRODUCTS

Isofield Eclipse

Sterile 400mm (16")
Cleanroom Nitrile Hand Specific Gloves

- GMP Grade A compatible
- ISO Class 4 & 5 compatible
- Sterile
- Nitrile
- White colour
- Elbow length 400mm (16")
- Hand specific
- Textured palm and fingers
- Beaded cuff
- 200 pairs per carton

PRODUCT CODE REF 20440	SIZE 6.0	2044060	SIZE 8.0	2044080
	SIZE 6.5	2044065	SIZE 8.5	2044085
	SIZE 7.0	2044070	SIZE 9.0	2044090
	SIZE 7.5	2044075	SIZE 10.0	20440100



ECLIPSE GLOVE MOULDS





Isofield CR+

Sterile 400mm (16")
Cleanroom Latex Gloves

GMP Grade A compatible
ISO Class 4 & 5 compatible
Sterile
Latex
Natural colour
Elbow length 400mm (16")
Ambidextrous
Textured palm & fingers
Beaded cuff
Protein level less than 50µg/g
Double-donnable
200 pairs per carton



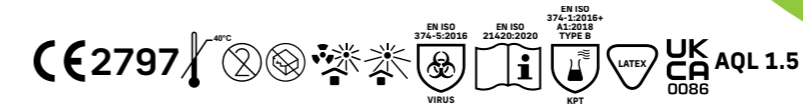
PRODUCT CODE	REF 10040			
		SMALL	6.0-6.5	10040S
		MEDIUM	7.0-7.5	10040M
		LARGE	8.0- 8.5	10040L
		XLARGE	9.0	10040XL



Isofield LS400

400mm (16")
Cleanroom Latex Gloves

ISO Class 5 compatible
Non-sterile
Latex
Natural colour
Elbow length 400mm (16")
Ambidextrous
Textured palm and fingers
Beaded cuff
Protein level less than 50µg/g
Double-donnable
1000 pieces per carton



PRODUCT CODE	REF 10140			
		SMALL		10140S
		MEDIUM		10140M
		LARGE		10140L
		XLARGE		10140XL



Isofield CRN+

Sterile 400mm (16")
Cleanroom Nitrile Gloves

GMP Grade A compatible
ISO Class 4 & 5 compatible
Sterile
Nitrile
White colour
Elbow length 400mm (16")
Ambidextrous
Textured palm and fingers
Beaded cuff
200 pairs per carton



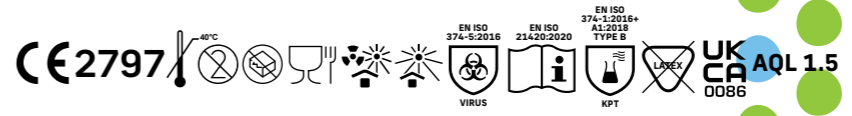
PRODUCT CODE	REF 20240		
	SMALL	6.0-6.5	20240S
	MEDIUM	7.0-7.5	20240M
	LARGE	8.0- 8.5	20240L
	XLARGE	9.0	20240XL



Isofield NS400

400mm (16")
Cleanroom Nitrile Gloves

ISO Class 5 compatible
Non-sterile
Nitrile
White colour
Elbow length 400mm (16")
Ambidextrous
Textured palm and fingers
Beaded cuff
Low endotoxin levels
1000 pieces per carton



PRODUCT CODE	REF 20340	
	SMALL	20340S
	MEDIUM	20340M
	LARGE	20340L
	XLARGE	20340XL
	XXLARGE	20340XXL

Isofield Volta

Sterile 300mm (12")

Cleanroom Nitrile Hand Specific Gloves

- GMP Grade A compatible
- ISO Class 4 & 5 compatible
- Sterile nitrile
- Accelerator free
- Low endotoxin levels
- Neon green colour
- 300mm (12")
- Hand specific
- Textured fingers
- Beaded cuff
- 200 pairs per carton



PRODUCT CODE	REF 20530	SIZE 6.0	2053060	SIZE 8.0	2053080
		SIZE 6.5	2053065	SIZE 8.5	2053085
		SIZE 7.0	2053070	SIZE 9.0	2053090
		SIZE 7.5	2053075	SIZE 10.0	20530100

300mm (12")





300mm (12")

Isofield NS300

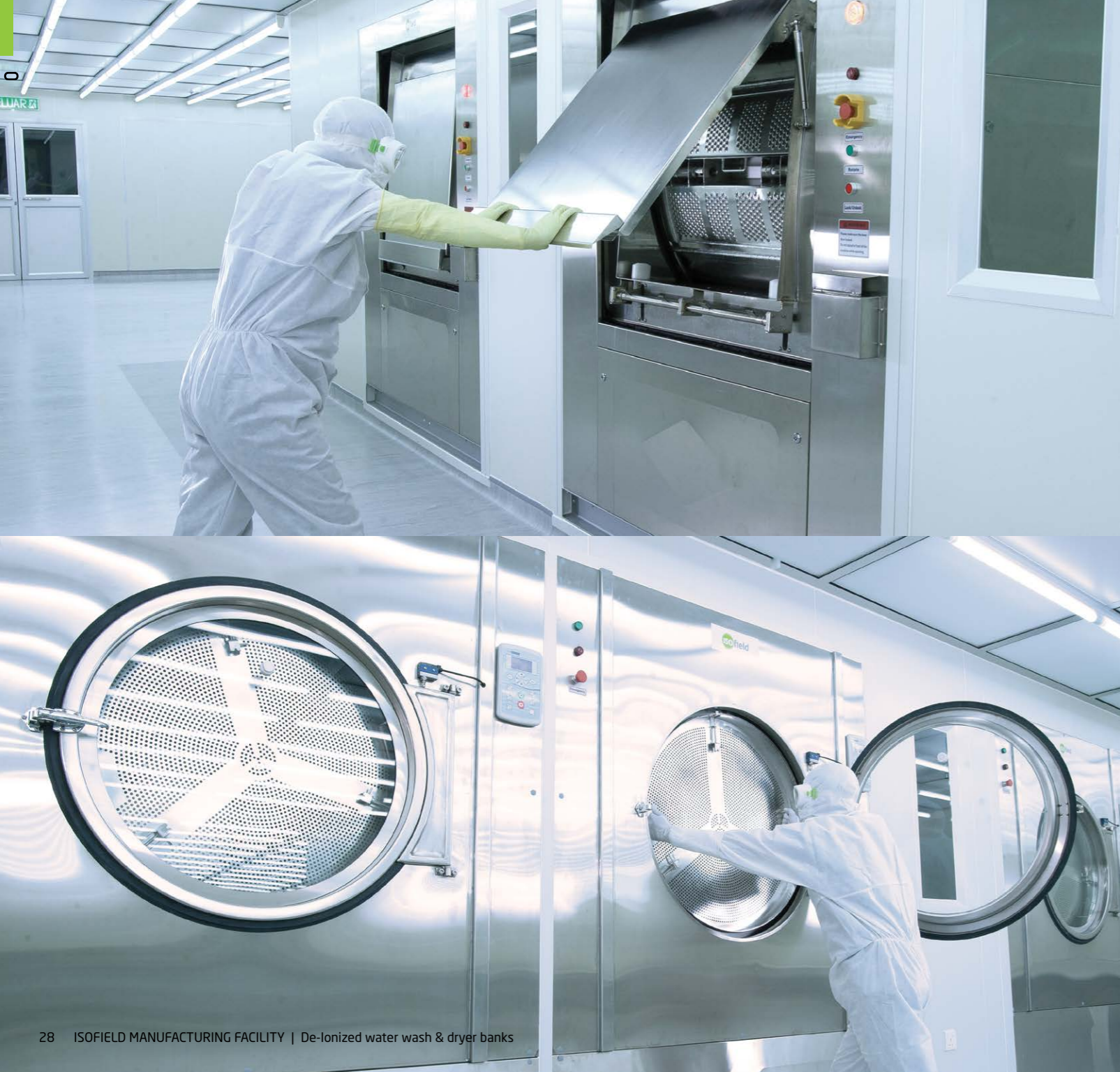
300mm (12")
Cleanroom Nitrile Gloves

- ISO Class 5 compatible
- Non-sterile
- Nitrile
- White colour
- Length 300mm (12")
- Ambidextrous
- Textured fingers
- Beaded cuff
- Low endotoxin levels
- 1000 pieces per carton

CE 2797

EN ISO 374-5:2016 EN ISO 21420:2020 EN ISO 374-1:2016+ A1:2018 TYPE B UKCA 0086

PRODUCT CODE	REF 20130	XSMALL	20130XS
		SMALL	20130S
		MEDIUM	20130M
		LARGE	20130L
		XLARGE	20130XL
		XXLARGE	20130XXL



300mm (12")

Isofield LS300

300mm (12")
Cleanroom Latex Gloves

- ISO Class 5 compatible
- Non-sterile
- Latex
- Natural colour
- Length 300mm (12")
- Ambidextrous
- Textured palm & fingers
- Beaded cuff
- Protein level less than 50µg/g
- Double-donnable
- 1000 pieces per carton



PRODUCT CODE	REF 10230	XSMALL	10230XS
		SMALL	10230S
		MEDIUM	10230M
		LARGE	10230L
		XLARGE	10230XL



Isofield CR++

Sterile 600mm (24")

Cleanroom Latex Hand Specific Gloves

GMP Grade A compatible
ISO Class 4 & 5 compatible
Sterile
Latex
Natural colour
Shoulder length 600mm (24")
Hand specific
Textured palm and fingers
Protein level less than 50 µg/g
100 pairs per carton



PRODUCT CODE	REF 10360	SIZE 6.0	1036060
		SIZE 6.5	1036065
		SIZE 7.0	1036070
		SIZE 7.5	1036075
		SIZE 8.0	1036080
		SIZE 8.5	1036085
		SIZE 9.0	1036090
		SIZE 10.0	10360100

