

## STATE FEEDBACK PINCH VALVE



<b>Hold Voltage PWM Freq.</b>	Approx. 25 kHz
<b>LED Indicators</b>	Power status (green), trigger status (blue), feedback status (yellow), warning (red—indicates for over 3.75 A or short circuit)
<b>Hit Time</b>	115 ± 30 ms
<b>Hit &amp; Hold Trigger Input</b>	3.3 to 24 VDC, 10 mA @ 24 VDC trigger input
<b>Operating Temperature</b>	-20 to 158°F (-29 to -70°C)
<b>SF Voltage</b>	12 or 24 VDC valve nominal (VDC dependent)
<b>SF Response Time</b>	<50 ms
<b>Valve Voltage</b>	12 or 24 VDC (nominal)
<b>More Info</b>	<a href="http://clippard.com/link/state-feedback">clippard.com/link/state-feedback</a>

*SF = State Feedback*

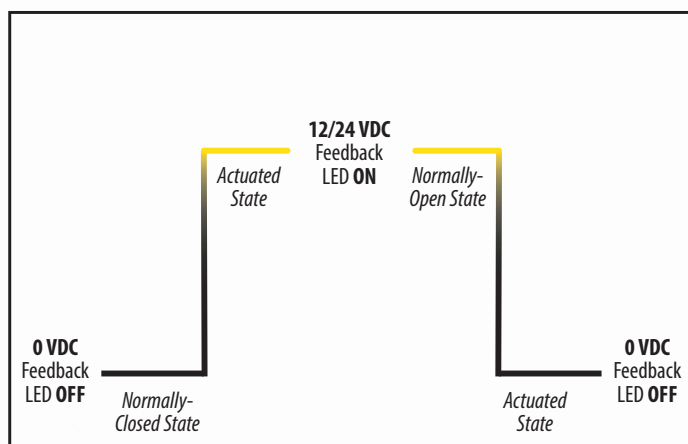
Clippard's State Feedback option gives you real-time insight into your valve's status for enhanced automation, improved diagnostics, and more intelligent control. This feature provides both an electrical signal and LED indicators to show when the valve is open or closed.

Whether you're logging system data, enabling safety blocks, or simply verifying operation, Clippard's State Feedback option delivers clear, accurate valve monitoring in a simple plug-and-play solution.

Applications include smart automation and process control systems, medical and analytical instrumentation, data logging for validation and compliance, high-cycle OEM systems needing status feedback, and more.

- Real-time status monitoring via output signal and visual LED feedback
- Closed-loop capability enables intelligent behavior and tighter process control
- Visual diagnostics with LED indicators for easy troubleshooting
- Integrated hit & hold circuit reduces power consumption and heat generation

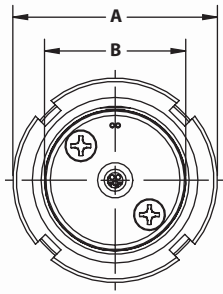
### FEEDBACK SIGNAL LEVELS



For normally-closed position valves, the state feedback signal is 0 VDC and when actuated the state feedback signal will be 12 or 24 VDC (valve VDC dependent). For normally-open position valves, the state feedback signal will be 12 or 24 VDC (valve VDC dependent) and when the valve is actuated the state feedback signal will be 0 VDC.

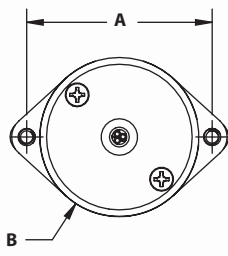
### NPV-P

Panel Mounted Pinch Valves



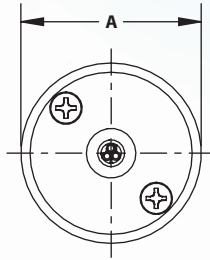
### NPV7

Long Stroke Pinch Valve

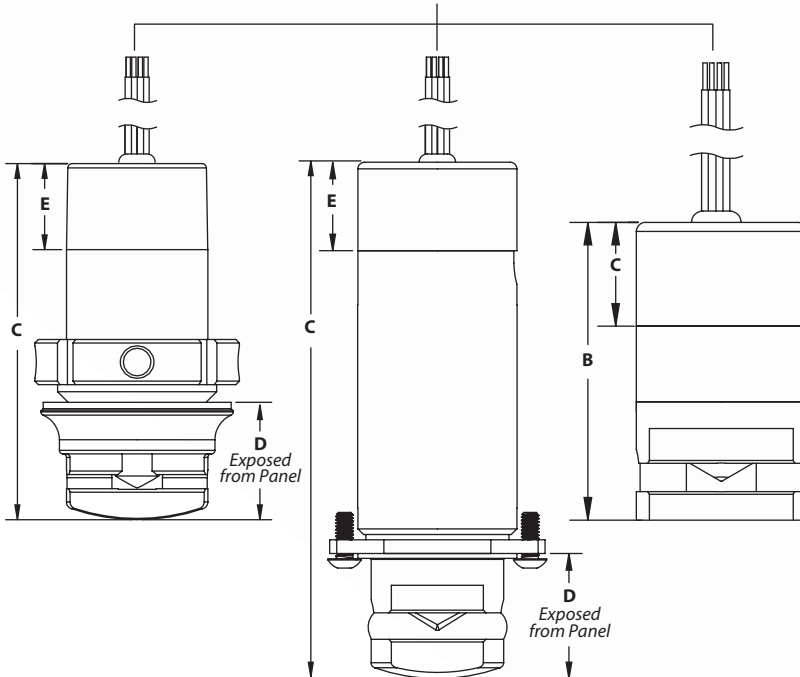


### NPV

Standard Pinch Valves

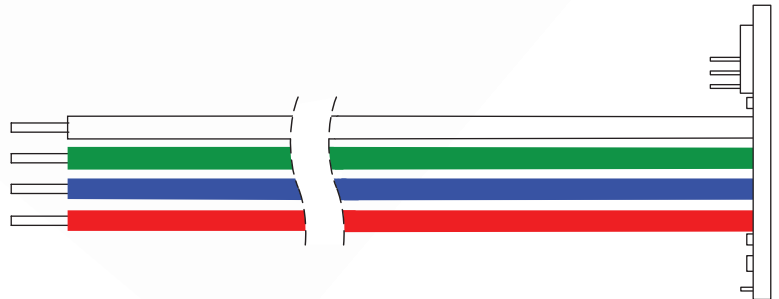


13" (330.2) Wire Leads, Stripped & Tinned

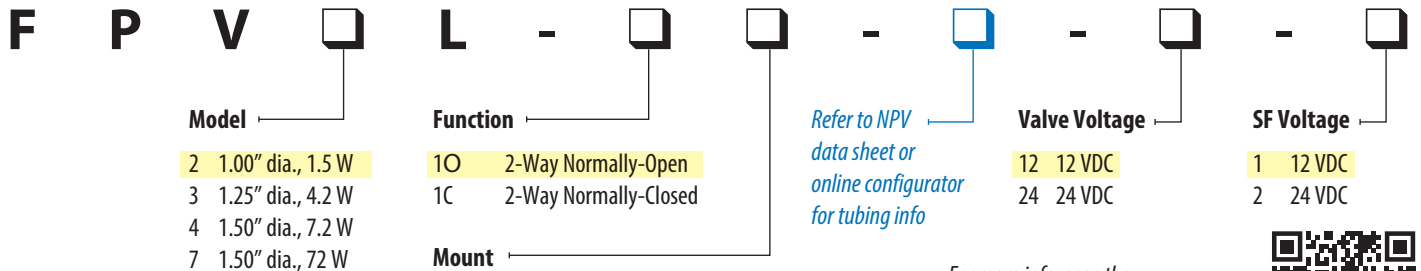


### WIRING DIAGRAM

- State Feedback**—12 or 24 VDC (valve VDC)
- Ground**
- Trigger**—Hit Hold triggering input, 3.3-24 VDC
- Valve Voltage**—12 or 24 VDC depending on valve coil selected



## ORDERING INFORMATION



### Example Part Number:

FPV2L-10-03-12-1

Refer to NPV  
data sheet or  
online configurator  
for tubing info

For more info, scan the  
QR code or visit

[clippard.com/link/state-feedback](https://clippard.com/link/state-feedback)



### DIMENSIONS, NPV-P (Panel Mounted Pinch Valves)

Model	2	3	4	7
A	1.45" dia. (36.8)	1.70" dia. (43.1)	1.94" dia. (49.4)	1.75" dia. (44.5)
B	1.00" dia. (25.4)	1.25" dia. (31.7)	1.50" dia. (38.1)	1.50" dia. (38.1)
C	2.63" dia. (66.9)	3.04" dia. (77.2)	3.42" dia. (87.0)	5.33" dia. (125.4)
D	0.83" dia. (21.2)	1.04" dia. (26.4)	1.32" dia. (33.6)	1.18" dia. (30.0)
E	0.72" dia. (18.3)	0.72" dia. (18.3)	0.84" dia. (20.8)	0.84" dia. (20.8)

### DIMENSIONS, NPV (Standard Pinch Valves)

Model	2	3	4
A	1.00" dia. (25.4)	1.25" dia. (31.7)	1.50" dia. (38.1)
B	2.04" dia. (51.8)	2.44" dia. (61.9)	2.79" dia. (70.8)
C	0.72" dia. (18.3)	0.72" dia. (18.3)	0.84" dia. (20.8)

Dimensions shown are in inches (millimeters listed  
in parentheses) and are for reference purposes only.

Visit [clippard.com](https://clippard.com) for more detailed 2D and 3D drawings  
and installation instructions.